

CLARA Field Day Plan 2026

Revised 11-Jun-26



Dates

Friday June 26 (setup)

Saturday/Sunday June 27, 28 (operate)

Mission

Goals: Clarifying this and gaining alignment with club members is critical. The challenge will be finding the right balance but we can do it.

Our club members have many different interests, including how they want to participate in Field Day. We can design a CLARA Field Day activity that works for a broad set of members by prioritizing these things:

- **Community building:** a key element of having a radio club is building and promoting a community of radio amateurs that enjoy getting together to do things. Have Fun Doing Field Day!
- **Emergency preparedness:** a key aspect of Field Day is setting up in a remote location and making radio contacts, using off-grid power.
- **Training/education opportunity:** There are many ways for people to learn during Field Day, including but not limited to being part of the station setup, participating in educational workshops, and getting on the air.
- **Field Day score:** one important way to measure success at Field Day is by the score achieved by the club. We should look at our score through the lens of continuous improvement. How well did we do last year and what can we improve this year?

These four items are roughly equal in terms of importance but I might give a little extra emphasis to Community Building. In the end, the value of a radio club comes from creating community. (Else, we can all just go off on our own and play with radios.)

Done well, these four priorities are synergistic and complementary. For example, community building should help drive participation, participation should drive a higher score. Emergency preparedness provides a training opportunity, training activities will result in bonus points, and community building. Improving our Field Day score will result in training (improved operators).

Overview

We will take an approach that is similar to last year's event, with these major elements:

- Class 2 A. Two transmitters, Club / non-club portable, plus VHF station.
- Station 1 is dedicated to CW only and Station 2 handles SSB and Digital.
- 100 watt transmitter power
- Set up in the San Isabel National Forest at Trout Creek Pass. (Same location as last year.)

Some additional things we will pursue this year:

- Increase the overall number of operating hours. Last year, the CW station was well used, so this is really a Station 2 issue.
- Put more emphasis on Bonus Points, consistent with CLARA interests and FD mission
- Adding a Get On The Air (GOTA) station
- Be open and welcoming to non-club participants including front range ops

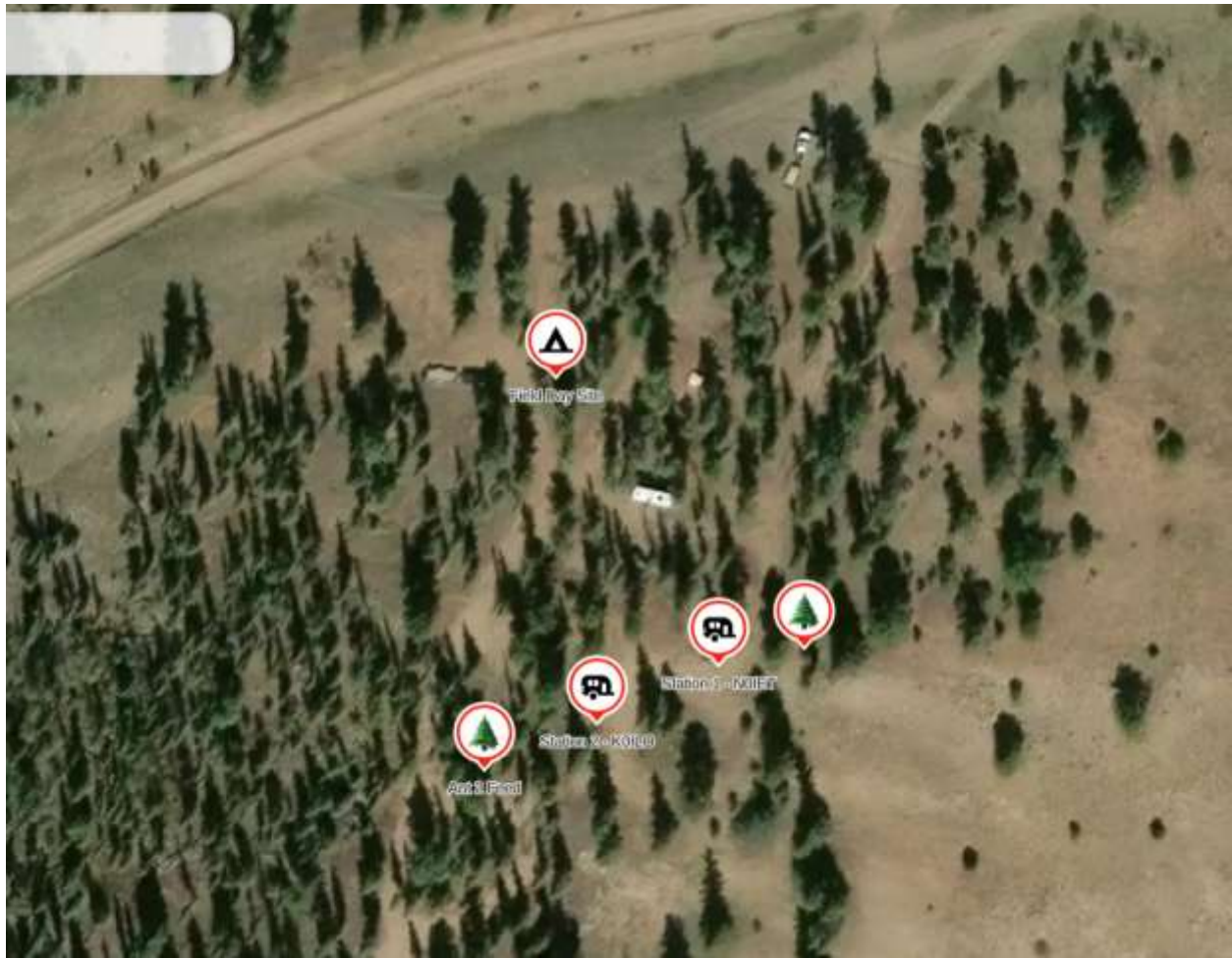
Set up begins on Friday, 1 pm. All stations optimized by 7 pm on Friday evening. Saturday morning is for training and final testing. Tear down at noon on Sunday.

Field Day Site



Lat/Lon: 38.90928, -105.98413

Here's a closer look at the planned positions of Station 1, Station 2, and the feed point of their end-fed antennas. The location of the VHF Station is not shown... we have plenty of options to choose from.



Key Roles

Role	Name	Key Responsibilities	Notes
Field Day Chair	Bob K0NR	Provide overall leadership for the event	
Station 1 Manager	Bob W0BV	Lead, manage, and ensure the successful operation of Station 1.	
Station 2 Manager	Marty WT0Z	Lead, manage, and ensure the successful operation of Station 2.	
VHF Station Manager	Scott W0KU	Lead, manage, and ensure the successful operation of the VHF Station	
Safety Officer	Brian KF5WCW	Perform the Safety Officer role as defined in the ARRL FD rules. Deliver 100 bonus points.	

Executive Chef	Doug K0ILO	Prepare and deliver the community dinner on Saturday night. Engage other people to assist.	Also breakfast on Saturday and Sunday mornings
Education Lead	Mike KE0PWR	Execute one or more training activities during FD. Make sure proper documentation is provided to the Logging Lead.	Winlink demo, maybe others
Bonus Points Lead	Brian KF5WCW	Accomplish the bonus point tasks we decide to pursue. Make sure proper documentation is provided to the Logging Lead.	
Logging Lead	Brian KF5WCW	Submit our FD entry on time with high quality. Work closely with the Station Managers, the Bonus Points Lead, and Safety Officer. Coordinate with the Station Managers concerning appropriate logging software.	
Site Acquisition Manager	Brian KF5WCW	Claim the FD site on Wednesday or Thursday, setting up RVs, tents and gear.	The two RVs will be in place early and Brian will be staying at the site. This is a huge help!
Onsite WiFi Engineer	Brian KF5WCW	Starlink Mini internet access, WiFi access	

Schedule

Wed/Thurs			
Time	Activity	Lead	Notes
Any	Claim campsite	Site Acquisition Manager	Set up tents/RVs to claim our usual spot near Trout Creek Pass
Friday June 26			
Time	Activity	Lead	Notes
1:00 PM	Setup Field Day Stations	Station managers	
7:00 PM	Finish Setup		

Saturday June 27			
Time	Activity	Lead	Notes
10:00 AM	Final checkout of stations	Station Managers	
Noon	Begin FD radio operations		
Education Program			
Time	Title	Presenter	Description
Noon to 1pm	WinLink 101	Mike KE0PWR	Demonstration and discussion on using WinLink for disaster response. This includes most likely Incident Command System (ICS) forms and map enabled content.
2pm to 3pm	Satellite communications	Matt KG0AT	How to make a contact via FM repeaters like the ISS: -Equipment basics to get started -More advanced options
3 pm to 3:30 pm	National Traffic System (NTS) and the Radiogram	Sam W5CU	Overview of the National Traffic System (NTS) and the Radiogram.
3:30 pm to 4pm	How to be a Fox	Tom W9TR	Tom covers the basics of being a "fox" in a fox hunt. Learn the ins and outs of being a crafty fox in this educational and fun session.
4 pm to 5 pm	WinLink Demos	Mike KE0PWR	Ad hoc WinLink demonstration: -Map generation from requested data -Types of data requests
End Educational Activities			
6:00 PM	Dinner	Executive Chef	
Evening	Field Day radio operations continue		
Sunday June 28			
Time	Activity	Lead	Notes
Morning	Field Day radio operations continue		
Noon	Tear down stations and camp site		

Station 1: CW

Station Manager	Bob W0BV	
Transceiver	Yaesu FTDX10	Sam's radio W5CU
Antenna	Myantenna 80-10m 2K+ Supported by pine trees	Walt W0CP providing it
Power source	Bill's RV	RV power: Three 100 Ah lithium batteries plus solar (but our location is shaded)
Logging Computer	Laptop, Win11	W0BV computer, needs 18 volt converter from Bill
Location (RV, Tent, ...)	Bill N0IET RV	

Station 2: SSB/Digital

Station Manager	Marty WT0Z	
Transceiver	Kenwood TS-590	Club transceiver, using this instead of the IC-7300 due to better front end performance
Antenna	Myantenna 80-10m 2K+ Supported by pine trees. Vibroplex Par EndFedz EF-80-10-JR-KW, 74 feet (as backup)	Bob K0NR providing it Marty WT0Z providing it
Power source	Doug's RV	2 x 300 Ah batteries plus one 100 Ah battery, solar
Logging Computer	EOC Notebook PC	
Location (RV, Tent, ...)	Doug K0ILO RV	

VHF Station

Station Manager	Scott W0KU	
-----------------	------------	--

Transceiver	Elecraft KX-3 with Amp (6m) Kenwood TR-9130 ? (2m)	Scott's radios
Antenna	6m: Moxon antenna 2m: M2 2M9SSB Supported by a mast on the camper.	Scott W0KU Bob K0NR
Power source	Scott's Truck Camper	200 Ah batteries plus solar
Logging Computer	Scott's Notebook PC	
Location (RV, Tent, ...)	Scott's truck camper	

Note that the VHF Station does not count as an additional transmitter when determining our category. In other words, we are still 2A.

GOTA Station

The GOTA station will be set up to provide for opportunistic radio contacts by qualified GOTA operators. These consist of 1) a person licensed since the previous year's Field Day, 2) a generally inactive licensee, or 3) a non-licensed person under the supervision of a control operator. The objective is to get newbies on the air AND pick up the extra points associated with a GOTA station. GOTA contacts get 5 points and there are also bonus points associated with having a GOTA Coach.

Station Manager	Matt KG0AT	
Transceiver	Yaesu FT-891	
Antenna	Loaded vertical or EFHW	This station is not optimized for performance, it needs to be just good enough.
Power source	Battery	From KG0AT or KF5WCW
Logging Computer	KG0AT laptop	
Location (RV, Tent, ...)	TBD	

The GOTA station will avoid interference to/from Station 1 by staying on a different band. For Station 2, the GOTA station will coordinate with their operation, potentially having Station 1 go off the air for a short time, if needed. This will depend on which bands and how many bands have good propagation on Field Day. We are not expecting to operating the GOTA for long periods of time. The GOTA station will generally operate Search and Pounce, looking for strong stations.

The GOTA station will use callsign KG0AT.

Bonus Points

These are the bonus points we will pursue:

- 100% Emergency Power
- Public location
- Public Information Table
- Message to Section Manager (Winlink?)
- Message handling (via Winlink)
- Alternate power
- W1AW Bulletin
- Educational Activity
- Site visit by representative of an agency
- Site visit by elected official
- Field Day Youth Participation
- Safety Officer Bonus
- Media presence

This is potentially 1300 points.

On-site Communications

Radio hams on site should carry an HT tuned to 146.55 MHz (CTAC1) for on-site communications. This frequency can be used for coordination between the FD stations, site logistics, etc. If enough people have radios monitoring this frequency, it turns into a local PA system. That is, announcements can be made that are heard all over the Field Day site.

VHF/UHF Radio Programming

If you have a new handheld transceiver that needs some channels programmed into it, Jim/KD0MRC and Bob/K0NR will be available to do this for you. This will be on demand, as needed on Saturday afternoon. (If those times don't work, let us know and we'll try to arrange another time.)

Red Trailer

We will have the Red Trailer from the EOC for use with the Winlink station and the educational activities. Probably have a pop-up shelter to provide some shade and rain cover.

Networking / Logging

Based on Brian's enthusiasm to get this working, we will have a wireless network on site, connected to the world via Starlink. The logging computers WILL be connected via WiFi and the logging software will be synced.

All logging computers will use N1MM software.

If we have trouble, we will fall back to having the computers not networked, which means **we need to keep the stations sequestered by mode** (CW mode only at Station 1, SSB/dig modes at Station 2, any mode above 50 MHz on the VHF Station).

We should think of this as a great emergency communications tool, to be able to deploy a local WiFi network almost anywhere.

Battery Power and Generator

We intend to operate the entire FD using battery power. Just in case, we will have a gasoline generator on site for use as a backup only. We only need one generator because the probability of both stations losing battery power is low. Bob K0NR is supplying the generator.

Publicity

Just like the past two years, we need to be careful with public announcements of this event. There are two main drivers: we do not have guaranteed access to the planned site, which is dispersed camping in the San Isabel National Forest. It is possible we may have to change locations at the last minute. The second driver is that if this becomes too big of an event, it could trigger USFS requirements for a Special Use Permit.

We can and will invite interested parties such as the 4H kids, people interested in learning about ham radio, ham radio operators that are not CLARA members, etc.

Video

Laurel McHargue (spouse of Mike KE0PWR) will be shooting a video of FD on Saturday. You can see an example of her work here:

<https://www.youtube.com/watch?v=2m83lf8CI9A>

Saturday Dinner

It appears our attendance at Field Day will be larger this year. It will be important to get a good estimate of this, primarily for the dinner so we have enough food.

We will send out an RSVP request on or about June 13th, asking for a response on dinner participation. We will provide our best estimate to Doug by June 19th. (Brian owns this.)

Recent W0CLA FD Scores

Year	Call	Final Score	Category	Power Mult	Participants	Power Source	Total CW QSOs	Total Digital QSOs	Total Phone QSOs	Total QSOs	Bonus Points
2025	W0CLA	5346	2A	2	17	G	1104	85	120	1309	350
2024	W0CLA	6754	2A	2	15	G	1374	114	276	1764	250

Signage

Bob W0BV has created a CLARA Field Day banner

Brian will make signs for Station 1, Station 2, VHF station, etc.

Other Open Issues & Notes

We should identify a backup site (or two), in case our preferred site does not work out.

Remember to bring lightweight rope for supporting antennas.

What bandpass filters do we have? Ask Brian.